



FORETRAVEL
MOTORCOACH

2020 ih-45 AND ic-37
PRODUCT GUIDE

Foretravel Motorcoach is an indulgence powerful enough to move the human spirit with its exquisite design and engineering.

Each ih-45 and our all NEW ic-37 are thoughtfully built with our signature craftsmanship and expertly designed Spartan chassis to deliver a superior ride and handling experience. The bold exterior graphics and seamless lines lure you into a breath-taking interior loaded with style, luxury and the latest technology that excite your inner-self long before your journeys begin.

Foretravel is undeniably the perfect traveling companion.



Newly Designed 15" Valid Dash with Push Button Ignition.





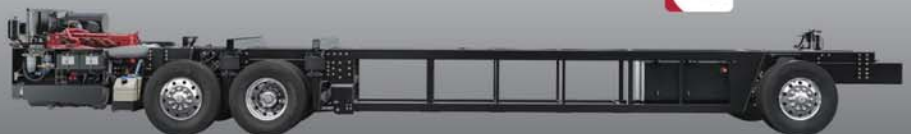
FORETRAVEL MOTORCOACH

ih-45



Travelride III Chassis Premium Features:

- Foretravel Travelride III Chassis - by Spartan
- All Air Ride with:
 - Two Air Bags (IFS front axle)
 - Four Outboard-Mounted Air Bags (Drive Axle)
 - Two Air Bags (Tag Axle)
- Cummins X15 605 HP Engine
- Spartan Cummins Connect
- Spartan Safe Haul
- Engine Brake: Three Stage Engine Brake with On/ Off Switch
- ABS Anti-Lock Braking System with Automatic Slack Adjusters
- Air Disc Brakes on all Wheels
- Air Hose for Tire Service
- Air line with Quick Connect
- Alcoa Aluminum Wheels with Dura-Bright Protection
- Allison 6 Speed Transmission MH 4000
- Alternator - 350-amp; Leece-Neville
- Automatic Traction Control (ATC)
- Auxiliary 12V Air Compressor
- Fuel Filter / Water Separator
- Front Axle - IFS (Independent Front Suspension)
- HWH - Active Air System and Computerized Air Leveling System
- Ridewell Independent Tag Axle
- Rear Axle Ratio: 4.30:1
- 20,000-lb. Towing Capacity/ 2,000-lb. Hitch Tongue with 7/4-Pin Plug
- Michelin Tires: Front 365/ 70R 22.5", Rear 315/ 80R 22.5"
- Collision Mitigation System with Adaptive Cruise Control
- Electronic Stability Control
- 3 Year Spartan Scheduled Maintenance Included
- 3 Year 24/7 Roadside Assistance through CoachNet®




**CUSTOM
INTERIORS**

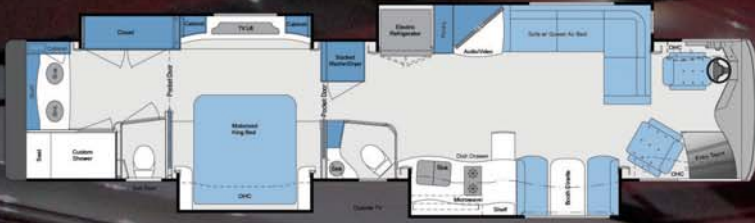





BATHROOMS



POPULAR CUSTOM DESIGNED ih-45 FLOORPLANS



**Bath and Half
Mid-Ship 55" 4K QLED TV**

**Bath and Half
Front Fold Down 55" 4K QLED TV**



**Bath and Half with Double Recliners
65" 4K QLED TV on Lift
Front Fold Down 55" 4K QLED TV**

**Full Double Bath
Two Bunks
Front Fold Down 55" 4K QLED TV**



**Bath and Half
Double Chaise Lounge
65" 4K QLED TV on Lift
Front Fold Down 55" 4K QLED TV**

**Bath and Half
Double Sofa with 65" 4K QLED on Lift
Front Fold Down 55" 4K QLED TV**



**Full Double Bath with Walk-In Jacuzzi Bathtub
Front Fold Down 55" 4K QLED TV**



FORETRAVEL ih-45 2020 Specifications

MOTORCOACH

CAPACITIES AND MEASUREMENTS

▪ Fresh Water 135 gal ▪ Holding Tank 145 gal ▪ Fuel 200 gal ▪ DEF 15 gal ▪ Interior Height 84" / 87" in Recesses ▪ Exterior Height 13'2" – Top of Roof A/C's

Engine

Cummins X15
18.7 CFM Air Compressor
1500 Watt Block Heater
Peak HP: 605 hp @ 1800 RPM
Peak Torque: 1950 lb-ft @ 1200 RPM

Transmission

Allison 6-Speed Transmission MH 4000
Push-Button Shift Pad
Allison Fuel Sense
Shift Inhibit

Chassis Ratings

GVWR: 54,000 lb
Front GAWR: 20,000 lb
Rear GAWR: 20,000 lb
Tag GAWR: 14,000 lb
GCWR: 74,000 lb

Suspension

Front: Reyco Granning IFS2000S3 with anti-sway bar
Rear: Spartan AC4-20
Tag: Ridewell RIA 207

Bilstein Shocks

Front: 60mm
Rear: 46mm
Tag: 46mm

Brakes

ABS: WABCO 6S/6M Brake
Front: Air Disc
Drive: Air Disc
Tag: Air Disc
Parking: Push/Pull Knob, Brake Interlock
Auxiliary: Engine compression brake with 4 position lever

Steering

VIP Wood Grain & Leather Smart Wheel with Integrated Radio Controls
Column: Power Tilt and Telescoping

Fuel System

Fuel Tank: 200 gallon with dual side fill
DEF Tank: 15 gallon, dual fill

Electrical System

Custom Modular 12v Electrical System
Batteries: Two 950 CCA
Alternator: 350-amp Leece-Neville

Cooling System

Side-Mounted Radiator:
Parallel Air Flow System with Low-Profile Radiator, Charge Air Cooler and Integrated A/C Condenser Utilizing a Modulated Engine-Driven Cooling Fan

Frame

Trussed, Torque-Box Structured Frame Design for Frame Strength, Reduced Camber and Improved Storage Capacity
Front: 14.25" x 3.5" x .31"
Rear (Rail): 12.75" x 3.5" x .31"
Rear (Drop): 10" x 3.5" x .38"

Tires

Front: Michelin XZA 365/70R 22.5 LRL
Rear: Michelin X Line Energy Z 315/80R 22.5 LRL
Tag: Michelin X Line Energy Z 315/80R 22.5 LRL

Wheels

(6) Alcoa Aluminum Wheels with Dura-Bright Protection
(2) Aluminum Wheels on Inside Dual Wheels

Wheelbase

318.5"



EXTERIOR FEATURES

Awning-PS, Two Carefree Roof Mounted Electric Patio Awnings with Lights on Passenger Side
Awning-DS, Two Carefree Roof Mounted Electric Patio Awning Shells with Lights
Topper Awnings on Slideouts - Painted to Match
Storage Bay:
Lights in Storage Bay Two Electric Sliding Cargo Trays
Freezer on Slide Out Tray Carpeted Storage Bays
Side Hinge Storage Doors with Remote Electric Door Locks Consolidated Components Bay
Dual-Pane Tinted and Insulated Windows
Easy View One-Piece Windshield
Electric Executive Entry Step
Cosmolite Roof - One Piece, Stain and UV Resistant
LED Lights:
Four Docking Lights Fog Lights
Color Changing Ground Accent Lighting High Beam Headlamps
Xenon Low Beam Headlights Porch Light
Marker Lights
FRP Sub Floor (One-Piece)
Heated/ Remote Chrome Mirrors with LED Turn Signals
Fresh Water Plumbing Supply Manifold
Custom Designed Paint Graphics with:
Paint Protection Below Windshield - Armor Coat
Full Body Exterior Paint with Multiple Clear Coat Finishes
Roof AC Drains
Trailer Wiring - 7 Pin Connector
Dual Fuel/ DEF Fill Locations
Utility Station:
50 Amp. Shoreline Connection Fresh Water Connection Soap Dispenser
Stainless Steel Lined Utility Bay Network Connection Water Fill Switch
Cable TV and Portable Satellite Connection 120v Receptacle Water Pump Switch
Electric Utility Reels - Water and Power Electric Dump Valve Tank Level Indicator
Electric Grey Water Bypass - Holding Tank Hot and Cold-Water Faucet Flush Kit

DASH & COCKPIT FEATURES

Push Button Ignition

Newly Designed 15" Valid Dash

Accent LED lights below the dash - Dimmable

Wireless Charger at Passenger Chair

Illuminated Cup Holders

Magazine Rack and Assist Handle with Phone Storage and
120V/ USB Charger Receptacle (Co-pilot)

Padded Dash Top

12-Volt Accessory Receptacle

Dual 1-Amp USB Charge Receptacle

Battery Boost Switch/ Auto-Charge

Cameras: 9 Total

One Total Vision Motorized Back-Up

Two Side Mounted

One Forward Facing and One Interior

Four Perimeter Birds Eye View

Dedicated Driver Monitor Camera Display, Side and 360 View Cameras
CB at Dash

Dash AC Fan Controls for Co-Pilot

Generator Auto Start/ Stop

Infotainment System:

GPS, AM, FM, Sirius/XM (Subscription Required) Bluetooth, USB, and iPod Compatibility

Passenger Touch Screen Monitor with GPS

Map Lights, Pilot and Co-pilot

Pedals, Throttle and Brake Power Adjust

Knoedler Air Ride Pilot Seat (Heated, Cooled, and Massage)

Villa Residential 6-Way Powered Co-Pilot with Footrest and Headrest (Heated and Cooled)

TRW Column Drive™ Steering Assist System

Steering Wheel:

Power Tilt and Telescoping

Smart Wheel with Radio Controls

Electric Windshield/ Privacy Shade and Sunblock

APPLIANCES • ELECTRONICS • LIGHTING • AUDIO-VIDEO

LED Accent at Toe Kick of Cabinets

4K QLED Smart TV in Livingroom (55" TV in Front Fold Down)

Silverleaf Total Coach Control System

Apple iPad with AV, Multiplex and Silverleaf Controls

Audio-Video:

HDMI and CAT6 Shielded A/V Cabling

CAT6 Network Cabling

5.1 Surround Sound System in Living Room

Stereo Sound System in Bedroom and Patio with 49" Smart TV

4K Blu-Ray Player

Two Universal Remote Controls

Winegard-Rayzar Automatic Domed HDTV Antenna

Stationary HD Satellite with HD DVR Receiver and 2nd HD Receiver

Road-IQ VDS System

Appliances:

GE, Advantium Convection Microwave

GE, Café Series Refrigerator with Built in Keurig K Cup

Two Burner Induction Cook Top Recessed with Cover

Washer and Dryer Connections

Dimmable Interior LED Lighting:

Under Countertops Window Trim Toe Kicks

Entry Door Floor Reading Lamps

Tire Pressure Sensors Displayed on Digital Dash

Head Hunter 120V Water Pump

Wifi Ranger Elite Pack FM

4G LTE MIMO Antenna w/ Dual SIM Cellular Modem Tethered to Wifi Ranger

INTERIOR LIVABILITY FEATURES

Natural Quartz Countertops

Filtered Ice and Water Dispenser

Electric Floor Heat

Pneumatic Pocket Doors

Custom Tile Floor

Decorative Insert in Large Floor to Ceiling Wall

120V Outlet with Dual USB Charge Ports in LR and BR

Multiplex Lighting System

Powered Step-Well Cover with Two Switch Locations

Foretravel Designed Bedding and Throw Pillows-

Foretravel Designed Window Treatment with Electric Day/ Night Shades

Slide-Out Rooms, Flush with Sidewalls when Retracted and Pneumatic Sealed

Built in Vacuum with Toe Kick and Hose Connection

Handcrafted Wood, Walnut or African Mahogany Cabinetry

HEATING • COOLING • ELECTRICAL

Onan 12.5 Kw Diesel Generator in Quiet Box

12-Volt Battery Disconnect

Dual 2800 Watt Inverter/ Charger with Integrated AC/DC Surge Protectors

50-Amp Shoreline Connection

Air-Conditioning and Heating with Offset Returns for Superior Quiet Operation

Air-Conditioning, Ducted with 4 Roof Airstats (45) 15,000 BTU's with Heat Pumps

Auto Temp. Start for Generator

Low-Battery Auto-Start for Generator

Six 4D House Batteries/ Two Engine Batteries, Group 31 with 950 CCA- Each

50-Amp Automatic Transfer Switch with Integrated Surge Suppression 2010

Electrical Surge-Suppression System

Aqua Hot Hydronic Heating 600D

WARRANTY

Coach: 2 Year/24,000 Miles

Chassis: 5 Year/75,000 Miles

Engine: 5 Year/100,000 Miles

Transmission: 5 Year/200,000 Miles

KITCHEN

Kitchen Utility Drawer Kitchen Pantry

Kitchen Countertop Extension Stainless Steel Kitchen Sink with Covers

BEDROOM

Slumber Ease Luxury King Size Mattress

BATH • SHOWER

Electric Exhaust Fan in Bath and Toilet Room with Auto Rain Sensor

Body Sprayer in Shower

Built-in Shower Bench

SAFETY FEATURES

All Coaches Built to RVIA Specifications

Spartan Advanced Protection System

Fog-Maker Engine Fire Suppression System

Lights:

Auto Headlights Illuminated Entry-Door Assist Handle

Daytime Running Lights

Tires:

Tyron® Bead-Lock Tire Blowout Protection (Front Tires)

Tire Pressure Monitoring System Displayed at Dash

Fire and Carbon Monoxide:

Rear Exit Door

Fire Extinguishers

Carbon Monoxide Detector

Smoke Detector

Cameras:

Bird's Eye View 360 Camera System

Road IQ Five Camera System with Integrated Hard Drive

Vorad Blind Spotter

Two GFI Protected Circuits

Electronic Safe

Security System

CSA Approved / Transport Canada Approved

OPTIONS

Bosch Washer/Dryer with Pull Out Shelf

Beveled Mirrors on Medicine Cabinet

Kitchen Window (FP Dependent)

Closet Cabinets Next to Dresser with Four Drawers at Bottom (FP Dependent)

Vented Windows in Bed Slide Below the Overhead

Laminate Cabinetry

Total Coach Control with Vegatouch Aurora

Outdoor Entertainment Pkg in Slide Room

Carefree Entry Door Awning

Carefree Patio Awnings on Driver Side

Carefree Electric Window Awnings

Paint Graphics through the Roof Mounted Patio Awnings

Armor Coat Above Windshield

320 Watt Solar Panel Package

Outdoor Grill on Tray

Outside Stainless Steel Trim Package

Single Bowl Kitchen Sink

Hammered Kitchen Sink

Dish Drawer

Wine Chiller

Trash Compactor

Ottoman

Combination or Stacked Washer and Dryer

Safe or Storage Behind Large Corner Mounted TV (FP Dependent)

In Motion SD Satellite Dish

Second Silverleaf Panel in Bedroom

Walk-In Bathtub

Three Form Decorative Inserts

65" 4K QLED on Lift in Living Room (FP Dependent)

Four Burner Induction Cooktop

Wheelchair Accessibility

Fireplace

Motorized Table

Rain Shower Head in Shower

BOLD denotes New 2020 Features

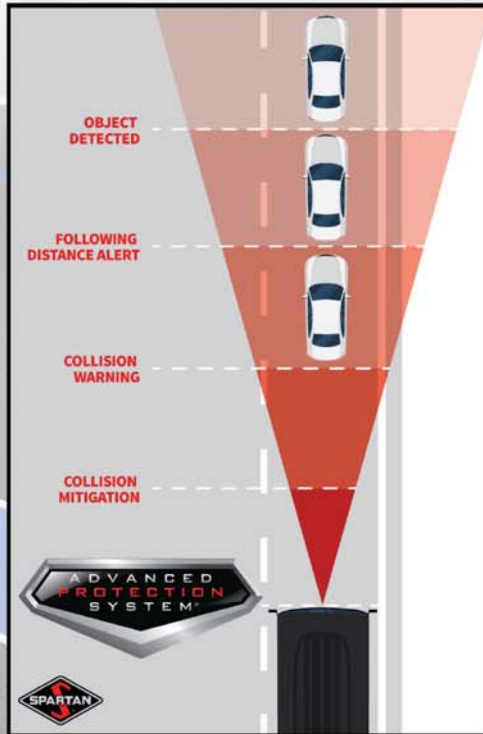


Foretravel is committed to your safety; that is why we have worked with the following vendors to keep you safe while you travel.

TYRON
Flat Tyre Protection



Bendix



HWH
CORPORATION

Active
Air

FOGMAKER
NORTH AMERICA






SPECIALTY
AND OUTDOOR





FORETRAVEL MOTORCOACH

ic-37



K2-450 Chassis Premium Features:

- Spartan K2-450 Chassis
- Cummins L450 K2 with 1250 ft/lbs. of Torque
- Transmission: Allison 3000 MH 6-Speed Transmission
- Engine Brake: Three-Stage Engine Brake with On/ Off Switch
- Fuel Tank: 150 Gallons - Dual Fill
- Def Tank: 15 Gallons - Dual Fill
- Michelin Tires: Front 315/ 80R 22.5", Rear 295/ 80R 22.5"
- Aluminum Wheels Steer and Outside Duals/ Inner Steel
- Alternator: 170 Amp
- Air Connection: Remote Air Connection (In Rear)
- Push Button Ignition
- 10,000-lb. Towing Capacity/ 1,000-lb. Hitch Tongue with 7/4-Pin Plug
- Spartan Safe Haul
- 3 Year 24/7 Roadside Assistance through CoachNet®



CAPACITIES AND MEASUREMENTS

Fresh Water: 122 Gallons
Holding Tank: 130 Gallons
Fuel: 150 Gallons
DEF: 15 Gallons
Wheel Base: 228"
Length: 37'8"
Interior Height: 81"
Exterior Height: 12'3" - top of roof A/C's







Specifications:

EXTERIOR FEATURES

Full-Body Paint with Protective Coating on Front Cap Below Windshield
Auto On/ Off Headlights
Fog Lights
Daytime Running Lights
LED Marker, Turn Lights
LED Docking Lights
Illuminated Entry Handle and Keypad System
Keyless Fob
Entrance Door with Automatic Step
Screen Door on Entry Door
Heated, Remote Controlled, Sideview Mirrors with Integrated Cameras
Heated and Enclosed Utility Center with System Monitor Panel
Double Doors on Engine

Options:

Electric Slide-Out Storage Tray
Trim Kit - Stainless on Bottom of Storage Doors
Freezer on Pull Out Tray in P1 Bay

WINDOWS • AWNINGS • VENTS

Electric Entrance Door Awning with LED Lights
Electric Patio Awning with Motion Sensor and LED Lighting
Peninsula Windows - Framed with Half Slides, Dual-Pane, Tinted, and Safety-Glass
Electric Shades on Spyder System in Cockpit
Manual Solar Day and Black Out Night Shades

Windows Pre-wired for Remote Control for After-Market Remote Control Option
Powervent in Bath Area - Remote Operated

Options:

Remote Control for Shades

INTERIOR LIVABILITY FEATURES

Multiplex Lighting System
Dimmable LED Lighting Throughout
Designer Accents and Soft Touch Vinyl Ceiling
Tile Flooring Throughout Coach (Excluding Slide-Outs and Bedroom)
Custom Wood Cabinetry
Flexsteel Furniture

Options:

Central Vacuum Cleaner with VacPan

PLUMBING

Water Filtration for Entire Unit - Two Filters in Bay
Auto Fill for Fresh Water Tank
Water Hose with Electric Reel
Tank Flush
122 Gallons Fresh Water
130 Gallons Grey/ Black Water Combined

HEATING • COOLING • ELECTRICAL

All Electric Coach
Aqua-Hot 400D
Two 15,000 BTU Low Profile ACs
Electrical Hookup - 50 Amp with Electric Cord Reel
8KW Onan Diesel Generator on Slide Out Tray
2,800-Watt Outback Inverter
Three 4D House Batteries
Two Engine Batteries, Group 31 with 950 CCA - Each
Electric Battery Disconnect Switch
Boost Switch for Engine Start
Pre-Wired for Solar Panels
Surge Protection on Inverter

Options:

Electric Floor Heat under Tile Floor
Roof Mounted Solar Panels

AUDIO • VIDEO

50" LED HDTV in Living Room with Sound Bar on Lift (FP Dependent)
43" Front TV Built-In with Sound Bar (FP Dependent)
43" LED HDTV in Bedroom with Sound Bar
Outdoor Entertainment - 43" HDTV with Sound Bar in Exterior Sidewall
Blu-Ray DVD Systems in Living Room, Bedroom, and Exterior
In-Dash Navigation System, Bluetooth, AM/FM Stereo, and Sirius XM Satellite Radio*
Premium Dash Audio Sound System with Speakers, Amplifier, and Subwoofer
Dedicated Driver Monitor for Rear, Side, and 360 View Camera
Side and Rearview Color Monitor System
Rear and Side-View Cameras, Side Activated by Turn Signals, Rear Activated by Reverse
Winegard Z1 Digital TV Antenna
HD Satellite Dish
Pre-Wired for In-Motion Satellite Dome
Wi-Fi Ranger Sky
Silverleaf Total Coach Control System

Options:

In-Motion Satellite Dome
360 Camera System**

DASH and COCKPIT FEATURES

Valid 15" Glass Dash Instrument Panel with Information Center
Straight Entry with Air Stepwell Cover
Electric Windshield Shades on Driver and Passenger Side Windows
Large Tinted One-Piece Windshield
Flexsteel 6-Way Power, Lumbar, Ultraleather Driver/Passenger Seats
with Integrated 3-Point Safety Belts
TRW Column Drive™ Steering Assist System Controls
Manual Tilt/ Telescope Steering Wheel with VIP Smart Wheel
HWH Automatic Hydraulic Leveling Jack System
Battery Boost System
Powered Adjustable Foot Pedals

KITCHEN

Solid-Surface Countertops
Tile Backsplash
Decorative Inserts on Pantry Door
Soft-Close Drawers with Full Extension Ball Bearing Guides
Culinary Drawer
Single Bowl Under Mounted Stainless-Steel Sink and Sink Covers
Two Burner Induction Cook Top
30" Stainless Steel Convection Microwave
33" Wide, 18 cu.ft. Samsung Residential Refrigerator with Integrated Ice Maker.

Options:

Dish Drawer

BATH

Macerator Toilet
Mirror on Medicine Cabinet
Full Length Mirror on inside of Bathroom Door

SHOWER

Framed Glass Door
Solid Surface Walls with Accent
Solid Surface Corner Shelf
Tile Floor

Options:

Assist Handle
Fold Down Seat in Shower

BEDROOM

King Bed with Plush Pillow Top Mattress
Solid Surface Nightstand Tops
Provisions for Stacked Washer and Dryer

Options:

Shoe Storage Recessed in Passenger Side Wardrobe
Safe Located in Passenger Side Wardrobe
Stacked Washer and Dryer

SAFETY FEATURES

- Docking Lights
- Fire Extinguisher
- Smoke Alarm
- Carbon Monoxide Detector
- Rear Exit Door
- Coach Built to RVIA Specifications

CHASSIS RATINGS

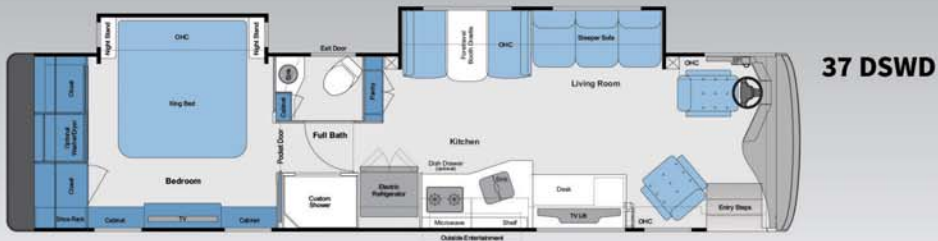
- Front Axle: 17,000 lb.
- Rear Axle: 24,000 lb.
- GVWR: 41,000 lb.
- GCWR: 51,000 lb.

WARRANTY

- Coach: 2 year/24,000 Miles
- Chassis: 5 year/75,000 Miles
- Engine: 5 year/100,000 Miles
- Transmission: 5 year/200,000 Miles

*Subscription Required **Pre-production Only

AVAILABLE ic-37 FLOORPLANS



ic-37 INTERIOR FINISHES

Pearl Mirage



Steel Gray



Black Caviar



ih-45



ic-37



FORETRAVEL
MOTORCOACH

1221 NW Stallings Drive | Nacogdoches, Texas 75964
800.955.6226 | www.foretravel.com



Foretravel, Inc. reserves the right to change or correct product specifications/pricing at any time without incurring obligations.