



FORETRAVEL
MOTORCOACH





Phenix

*Imagination & unique
as a fingerprint, the flagship
Phenix is the ultimate in
customized luxury. Not only a
premiere motorcoach in which
to tour this beautiful country
we live in, but one that allows
the freedom of expression. Our
talented Custom Design Team
has the experience to assist
you in creating your Foretravel
that is uniquely you.*





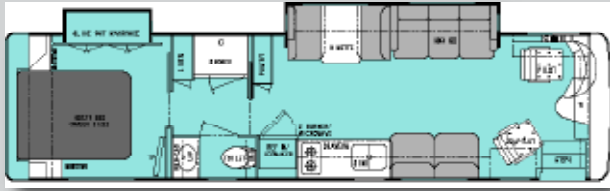


Nimbus



Quality is never compromised in a Foretravel product. The ever-popular Nimbus, available in the XT, SE, & CE series, offers the superior driveability & handling that you anticipate every Foretravel to have. Beautiful, elegant appointments are found throughout in a motorcoach that offers a range of prices, engine sizes, features and custom options.

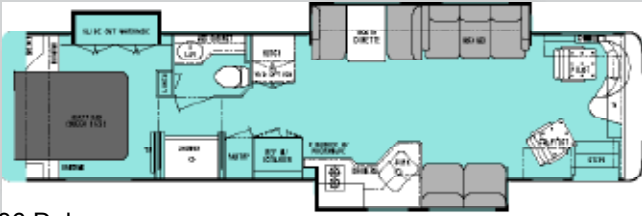
Nimbus XT



34 Classic



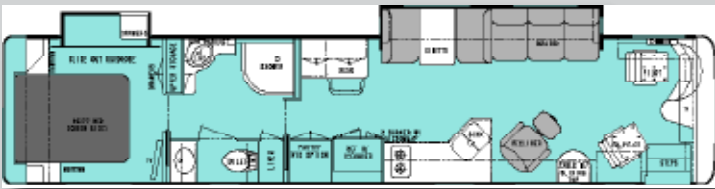
36 Classic



36 Delano

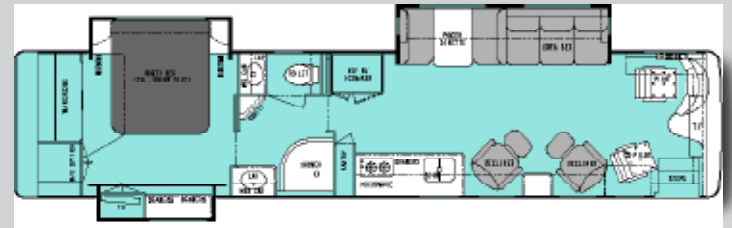


38 Classic



40 Modena

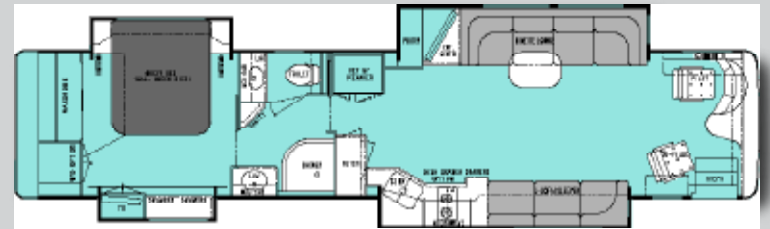
Nimbus SE



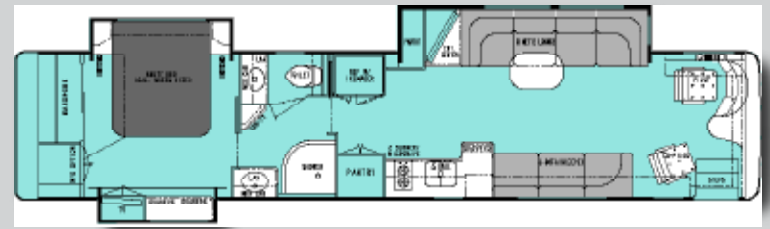
40 Tahoe



40 Caspian

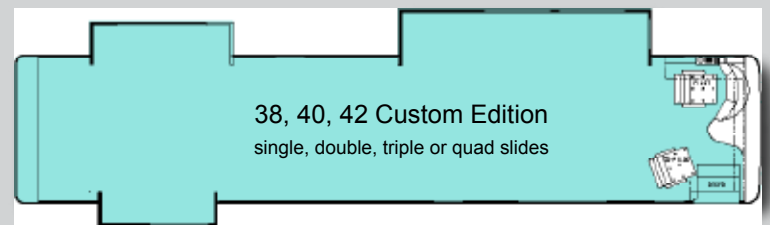


42 Carlyle



42 Castella

Nimbus CE

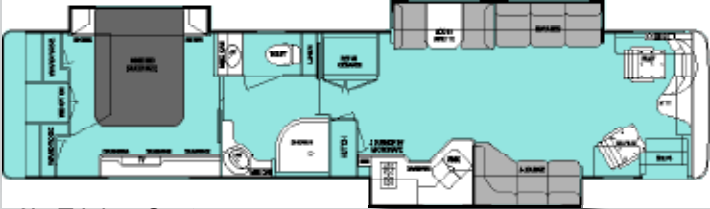


38, 40, 42 Custom Edition
single, double, triple or quad slides

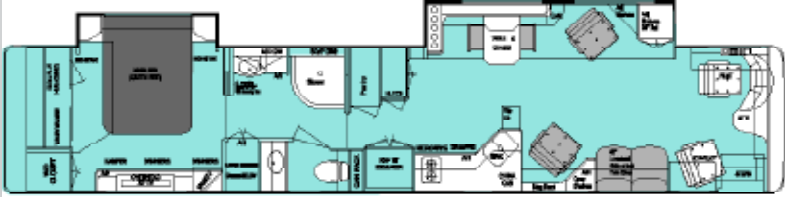
Phenix

The Custom Phenix

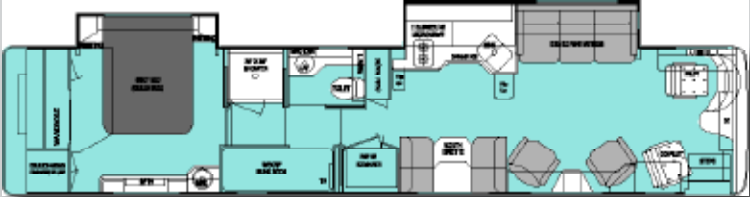
- Choose your slide room combination
- Create your floorplan
- Design your interior
- Our Custom Design Team will assist you every step of the way



40' • Triple • Custom



45' • Double • Custom



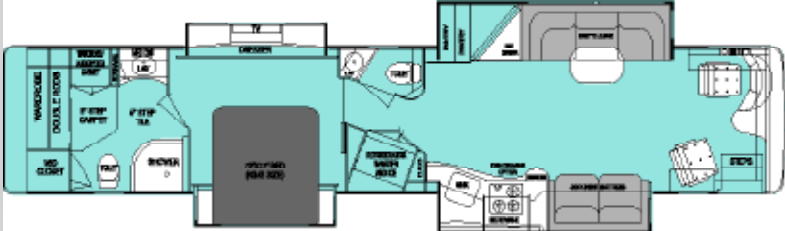
42' • Double • Custom



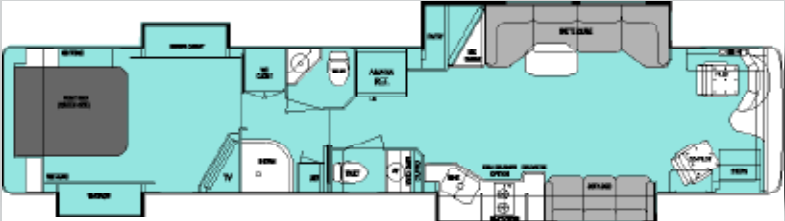
45' • Triple • Custom



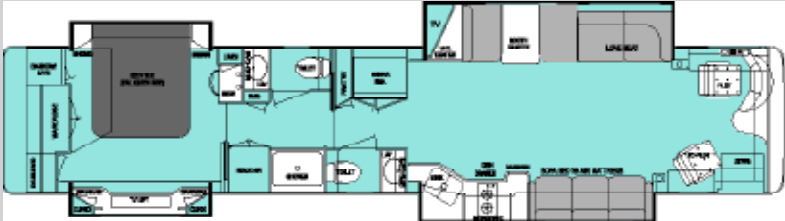
45' • Quad • Custom



45' • Quad • Custom



45' • Quad • Custom



45' • Quad • Custom

Chassis Features	Nimbus XT 36',38',40'	Nimbus SE 40',42'	Nimbus CE 38',40',42'	Phenix 40',42',45'
ABS anti-lock braking system				
with automatic slack adjusters	•	•	•	•
Air disc brakes on all wheels	•	•	•	•
Air hose for tire service	•	•	•	•
Air quick connect in storage bay	•	•	•	•
Alcoa aluminum wheels w/ Dura-Bright protection	•	•	•	•
Allison 6 speed transmission MH 3000R	•		• (38)	
Allison 6 speed transmission MH 4000R		• (40 & 42)	• (40 & 42)	•
Allison transmission retarder	•	•	•	•
Alternator - 160-amp	•		• (38)	
Alternator - 200-amp		• (40 & 42)	• (40 & 42)	
Alternator - 320-amp				•
Automatic traction control (ATC)	•	•	•	•
Auxiliary 12v air compressor	•	•	•	•
Chassis - TravelRide by Foretravel	•	•	•	•
all air ride with:				
4 outboard-mounted air bags (drive axle)	•	•	•	•
4 outboard-mounted air bags (straight front axle)	•	•	•	•
2 air bags (IFS front axle)	★ Option	★ Option	Option	•
2 air bags (lifting tag axle)		• (40 & 42)	• (40 & 42)	•
Engine - Cummins ISL 425 HP	•		• (38)	
Engine - Cummins ISM 500 HP		• (40 & 42)	• (40 & 42)	
Engine - Cummins ISX 600 HP				•
Fuel filter/water separator	•	•	•	•
Fuel system w/air & water purge		• (40 & 42)	• (40 & 42)	•
Front axle - straight beam	•	•	•	•
Front axle - IFS (independent front suspension)	★ Option	★ Option	★ Option	•
Front tow retrieval points	•	•	•	•
House batteries - 210 amp AGM each	•	•	•	•
HWH - computerized air leveling system	•	•	•	•
HWH - active air system				★ Option
Power steering	•	•	•	•
Radiator coolant recovery system	•	•	•	•
Rear axle ratio: 4.30:1		★	★ (40 & 42)	•
Rear axle ratio: 4.78:1	•		• (38)	
Receiver hitch - 18,000 lb. rated	•	•	•	•
Remote battery jumper terminals		•	• (40 & 42)	•
Suspension: Firestone air bags,	•	•	•	•
Tag axle, lifting		•	• (40 & 42)	•
Michelin Tires: 295/80R22.5	★	★	★	
Michelin Tires: 315/80R22.5				•
Transmission oil cooler	•	•	•	•

Exterior Features				
Auxiliary rear brake lights and turn signals	•	•	•	•
Awning, Girard - electric door	Option	Option	Option	Option
Awning, Girard roof-mounted, electric patio	1	1	1	2
Awning, Girard shells	Option (1-38/40)	• (3-40/42)	• (1-38, 3-40/42)	•
Awnings, Girard electric window	Option	Option	Option	Option
Awnings, Zip Dee manual window	Option	Option	Option	Option
Cargo tray, sliding	★ 1	1	1	1

	Nimbus XT 36',38',40'	Nimbus SE 40',42'	Nimbus CE 38',40',42'	Phenix 40',42',45'
Cargo tray, sliding, electric	★ Option	★ Option	★ Option	★ Option
Carpeted storage bays	•	•	•	•
Chairs, folding patio (2)	Option	Option	•	•
Consolidated components bay	•	•	•	•
Docking lights, (4) with switch in dash	•	•	•	•
Docking lights, (4) with switch in dash & bedroom				•
Dual halogen headlamps	•	•	•	•
Dual-pane tinted & insulated windows	•	•	•	•
Easy view one-piece windshield	•	•	•	•
Electric dump valves	★	★	★	★
Electric entry step	•	•	•	•
Electric entry step (Executive)				•
Electric utility reels	★	•	•	•
Fiberglass roof & sub floor (one-piece)	•	•	•	•
Flush kit	★	•	•	•
Fog lights	•	•	•	•
Freezer, 100lb in storage bay	Option	Option	Option	Option
Fuel fill - on both sides of coach	•	•	•	•
Gray water bypass for holding tank	★	★	★	★
Heated/remote triple head chrome mirrors w/LED turn signals	•	•	•	•
Hidden air horns	•	•	•	•
Lighted entry door w/ assist handle, keypad & doorbell	•	•	•	•
LP connection	★	•	•	Option
Fresh water plumbing supply manifold	•	•	•	•
Marker lights, LED		•	•	•
Mud flaps	•	•	•	•
Paint protection below windshield	Option	Option	Option	★
Painted exterior, full body paint w/ clear coat finish	•	•	•	•
Parallel storage doors	★	•	•	•
Porch light	•	•	•	•
PTL entry door with screen and kick guard	•	•	•	•
Remote storage door locks	•	•	•	•
Roof AC drains	•	•	•	•
Stainless steel lined utility bay			•	•
Storage bay lights	•	•	•	•
Trailer wiring	•	•	•	•
TV antenna - electric with booster	★	•	•	•
TV outlet and 12v outlet in storage bay	•	•	•	•
Utility Station:				
Fresh water connection, phone connection, 50 amp shoreline connection, paper towel holder, hot & cold water faucet, water pump switch, cable TV, water fill switch, 120v receptacle, & soap dispenser	•	•	•	•
Xenon low beam headlights		Option	•	•

Dash & Cockpit Features				
12 volt accessory receptacle	•	•	•	•
Battery boost switch	•	•	•	•
Camera, motorized back-up with control at dash	★	★	•	•
Cameras, mirror mount w/ color back-up monitor	★	•	•	•
CB at dash, hand held	★	•	•	•

★ New Standard Equipment for 2009 Models

	Nimbus XT 36',38',40'	Nimbus SE 40',42'	Nimbus CE 38',40',42'	Phenix 40',42',45'
Compass and outdoor temperature	•	•	•	
Co-pilot seat, Villa leather 6 way power w/ footrest	•			
Co-pilot seat, Villa residential 6 way power w/footrest & headrest	Option	•	•	•
Cruise control with dash indicator light	•	•	•	•
Dash AC controls for co-pilot	•	•	•	•
Driver and passenger drink holder	•	•	•	•
Entry flooring, hard surface	•	•	•	•
Gauges, backlit analogue	•	•	•	•
Generator auto start/stop	•	•	•	•
GPS/AM/FM/CD in dash (w/ xm sat. radio)	★	•	•	•
Illuminated dash panel	•	•	•	•
Monitor, passenger satellite/GPS	Option	Option	Option	★
Map lights, pilot & copilot	•	•	•	•
MP3 input at dash	★	★	★	★
Pedals, throttle & brake adjustable	•	•	•	•
Pilot seat, Villa leather 6-way power	•	•	•	
Pilot seat, Villa leather 6-way power with air ride				•
Silverleaf digital glass dash		Option	Option	Option
Silverleaf VMS 440 (eng./trans. monitor)	Option	Option	Option	★
Steering wheel, tilt and telescoping	•	•	•	•
Steering wheel, wood look Smart wheel	★	•	•	•
Transmission gear selector, touch-pad	•	•	•	•
Windshield / privacy shade, electric	•	•	•	•
Windshield wipers, synchronized	•	•	•	•
Windshield, shade band at top	•	•	•	•

Appliances • Electronics

Lighting • Audio-Video

Alarm Clock, built in	★	★	★	•
Battery charger, solar	Option	Option	Option	Option
Cellular antenna, digital	Option	Option	Option	Option
Component audio and digital video cables	•	•	•	•
Cook top, 2-burner electric	Option	Option	Option	•
Cook top, 2-burner LP w/electronic ignition (recessed)	•	•	•	Option
Home theater system in LR w/ Anthony Gallo Speakers	•	•	•	•
DVR - Blue-ray™ - high def				★
DVD Player	★	★	★	
Inverter/power monitor panel in living room area	•	•	•	•
Lighting, accent under counters	★Option	★	★	★ (+valances)
Lighting, floor lights	★	★	★	★
Lighting, in cabinet below kitchen sink	★	★	★	★
Lighting, Halogen reading lamps in bedroom	•	•	•	•
Microwave, GE Advantium (black)	★	★	•	•
MX900 Universal remote	2	2	2	
MX950/980 Universal remote		Option	Option	2
Refrigerator, 120v electric w/ice & water in door		Option	Option	•
Refrigerator, Dometic side-by-side 12 cu. ft	•	•	•	Option (14cu ft)
Satellite radio, XM (Phenix includes 18mth subscription)	★	★	★	★
Satellite system, in motion w/HD receiver	★	★	★	
Satellite system, in motion w/ HD DVR receiver	Option	Option	Option	•
Satellite system, 2nd HD receiver	Option	Option	Option	★

	Nimbus XT 36',38',40'	Nimbus SE 40',42'	Nimbus CE 38',40',42'	Phenix 40',42',45'
Silverleaf Total Coach monitor				•
Tire Pressure Sensors, Remote	★	★	★	★
TV 23" LCD w/DVD in bedroom	★	•	•	
TV 32" LCD w/DVD in bedroom				★
TV 37" LCD in living room	★	•	•	
TV 42" LCD in living room		Option (FD)	Option (FD)	★
TV antenna - electric with booster	★	•	•	•
Washer/dryer connections	•	•	•	•

Interior Livability Features

Powered step-well cover with two switch locations	•	•	•	•
Brushed nickel cabinet hardware	•	•	•	•
China toilet	•	•	•	•
Color-coordinated throw pillows (sofa & bed)	•	•	•	•
Concealed door hinges	•	•	•	•
Designer kitchen faucet with pullout sprayer	•	•	•	•
Designer window treatment with day/night shades	•	•	•	
Designer window treatment with electric shades			Option	•
Electric Fantastic fan in bath & toilet room w/auto rain sensor	•	•	•	•
Filter, drinking water & ice maker water	•	•	•	•
Floor-to-ceiling wallpaper and chair rail	•	•	•	•
Floor Heat, electric (with approved flooring)		Option	Option (40-42)	★
Kitchen pantry	•	•	•	•
Lighting, Intellitec multiplex system with dimmers	★	★	★	★
Magazine rack and drink holder at co-pilot seat	•	•	•	•
Queen bed (60" x 77") (66" x 77" floorplan dependent)	•	•	•	•
Recliner	• (FD)	• (FD)	• (FD)	• (FD)
Showerhead slider	•	•	•	•
Sink, vessel lavatory sink				•
Skylight above shower	•	•	•	•
Slide-out rooms, flush w/ sidewalls when retracted	•	•	•	•
Slide-out rooms, pneumatic sealed	•	•	•	•
Solid surface countertops (kitchen and bath)	•	•	•	• (Silestone)
Solid surface desktop (floorplan dependent)	•	•	•	• (Silestone)
Solid surface dinette table	•	•	•	• (Silestone)
Solid surface nightstand tops		•	•	• (Silestone)
Solid wood bedroom countertops	•			
Stainless steel kitchen sink w/covers	•	•	•	•
Storage under entry step	•	•	•	•
Telephone jack in living area and bedroom	•	•	•	•
Tile floor (kit, bath, D & P area)		• (40-42)	• (40-42)	•
Resilient ceramic tile (vinyl) (bath, D & P area)	•		• (38)	
Vacuum, built in	★	★	★	★
Washer dryer combination	Option	Option	Option	Option
Washer dryer, stacked		Option (FD)	Option (FD)	Option (FD)
Wood, handcrafted cherry, walnut or maple cabinetry	•	•	•	•
Wood, Bubinga				Option
Wood, African Mahogany			Option	Option

Nimbus XT	Nimbus SE	Nimbus CE	Phenix
36',38',40'	40',42'	38',40',42'	40',42',45'

Safety Features

All coaches built to RVIA specifications	•	•	•	•
Carbon monoxide detector	•	•	•	•
Daytime running lights	•	•	•	•
Drive & passenger 3-point seat belts & shoulder harnesses	•	•	•	•
Emergency flasher lights	•	•	•	•
Fire extinguishers (2)	•	•	•	•
GFI protected circuits	•	•	•	•
High-mounted additional brake lights	•	•	•	•
Interior exit-assist handle	•	•	•	•
Lighted entry-door assist handle	•	•	•	•
LP leak detector	•	•	•	• w/LP
Polarity meter/monitor – 120v	•	•	•	•
Electronic Safe	★	★	★	•
Security system	★	★	★	•
Smoke detector	•	•	•	•

Heating • Cooling • Electrical

10kw diesel generator in quiet box	• (36-38)		• (36-38)	
12.5kw diesel generator in quiet box	★(40)	★	★(40-42)	★
12 volt battery disconnect	•	•	•	•
2000 w inverter/charger	•		• (38-40)	
2800 w inverter/charger		★	★(40-42)	★
50 amp shoreline connection	•	•	•	•
Air conditioning and heating with hidden returns	•	•	•	•
Air conditioning, ducted with 2 roof airs	• (36-38)		• (38)	
Air conditioning, ducted with 3 roof airs	★(40)	★	★(40-42)	★(40-42)
Air-conditioning, ducted with 4 roof airs				• (45)
Auto temp.start for generator	•	•	•	•
Electrical surge-suppression system	•	•	•	•
Heat pumps on roof AC's	•	•	•	•
Hydronic heating with galvanized steel housing	•	•		
Hydronic heating with stainless steel housing			•	•
Low-battery generator auto-start	•	•	•	•

Capacities • Measurements

Available Lengths	36',38',40'	40',42'	38',40',42'	40',42',45'
Exterior Height	12'3"	12'3"	12'3"	12'3.5"
Exterior Width	102"	102"	102"	102"
Fresh Water Capacity	95 gal.	135 gal	95 gal (36-38) 135 gal (40-42)	135 gal
Holding Tank(s)	145 gal	145 gal	145 gal	145 gal
LP Capacity	17 gal	17 gal	17 gal	
Fuel Capacity	120 gal	150 gal	120 gal (36-38) 150 gal (40-42)	200 gal

Warranty

Coach	12mo/12000mi	12mo/12000mi	15mo/21000mi	18mo/24000mi
Structure	4yr/75000mi	4yr/75000mi	5yr/100000mi	5yr/100000mi
Engine	5yr/100000mi	5yr/100000mi	5yr/100000mi	5yr/100000mi
Transmission	5yr/unlimited mi	5yr/unlimited mi	5yr/unlimited mi	5yr/unlimited mi
Free Scheduled Maintenance During Foretravel Limited Warranty Period Including: (Phenix Only) Engine, Transmission & Generator Oil and Filter Change, Hydronic Heating System Maintenance and Chassis Lube				

★ New Standard Equipment for 2009 Models

A wide variety of woods are your choice including exotic *Bubinga pictured here and on page 2. +African Mahogany, Cherry, Maple and of course traditional Walnut all handcrafted like only Foretravel can.

* Bubinga optional only on Phenix
+ African Mahogany optional only on Nimbus CE & Phenix.



Pictured is a Phenix dash with optional Silverleaf digital glass display. All models come with Villa 6 way power seat, adjustable brake & accelerator peddles, back-up camera with dash monitor and Allison transmission retarder.



The Onan Generator tray is hydraulically powered for easy maintenance access.





Horizontal parallel storage doors below slide rooms.
Vertical storage doors in other locations.
Standard on all models.



Horizontal parallel storage door for easy access to
storage bay when slide room is extended.



Stainless steel lined utility bay.
Standard on Phenix and Nimbus CE.



SAFETY

A characteristic that has always been a top priority in the engineering and construction of a Foretravel. Since 1987, all-wheel air disc brakes have been standard on our chassis. Also standard on all our models is the added braking power of the Allison transmission retarder, a supplemental braking system far superior to all others.



MANEUVERABILITY

Foretravel has always been set apart by its superior handling and driveability but now the best just became better. Independent Front Suspension is now standard on Phenix and available on all Nimbus models. Yet simply having a better turning radius was not our only goal. We've maintained our superior ride by adding *HWH's Active Air to our suspension. The results have been the perfect marriage of ride and maneuverability.

*optional only on Phenix





FORETRAVEL
MOTORCOACH



“Since Foretravel’s humble beginnings in 1967, C.M. Fore’s vision of handcrafting “Motorhomes of Distinction” continues to be our passion.”

*Lyle D. Reed
President, Foretravel Motorcoach*

1221 NW Stallings Drive, Nacogdoches, Texas 75964 • 800-955-6226 • www.foretravel.com

Foretravel, Inc. reserves the right to change or correct product specifications/pricing at any time without incurring obligations.